



CANSO GLOBAL SAFETY CONFERENCE 2025

24 – 28 MARCH 2025 • CHRISTCHURCH, NEW ZEALAND

HOSTED BY **AIRWAYS**



MANAGING THROUGH CRISIS



LESSONS LEARNED FROM THE 2011 CHRISTCHURCH EARTHQUAKE

PRESENTER



James Evans

Acting General Manager Commercial
Airways New Zealand



Christchurch earthquake 2011



Te Whare Ao Rangi, Christchurch

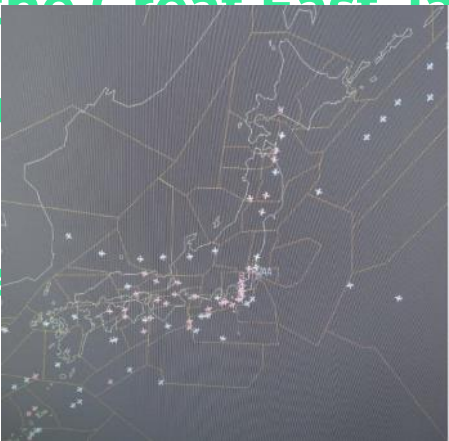
MANAGING ALL IN-FLIGHT AIRCRAFT TO LAND SAFELY

The accident at Haneda occurred in the evening when people were traveling to celebrate the New Year. It was during a time when a high number of aircraft were flying to Haneda. 72 aircraft diverted.

It is an essential task for ANSP to safely land aircraft that have lost their original destination.

However, many small and medium-sized airports did not have extra parking spaces. We have had such experiences in the past. In March 2011, two airports in the Tokyo metropolitan area, Haneda and Narita, were closed at the same time due to the Great East Japan Earthquake. Many aircraft were stranded.

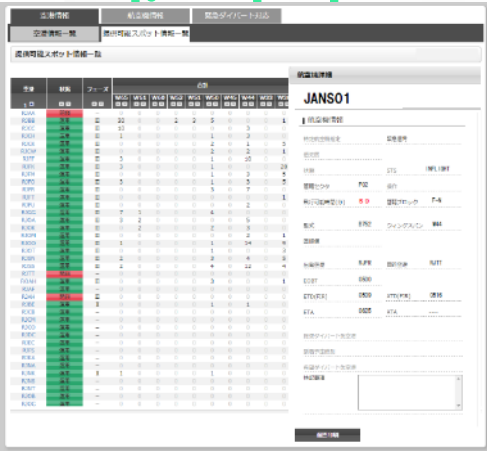
Based on
landing
estimates
situation
Display
(To Tokyo)



learned, we
ft based
nt plan, a
ght. Airport
Status



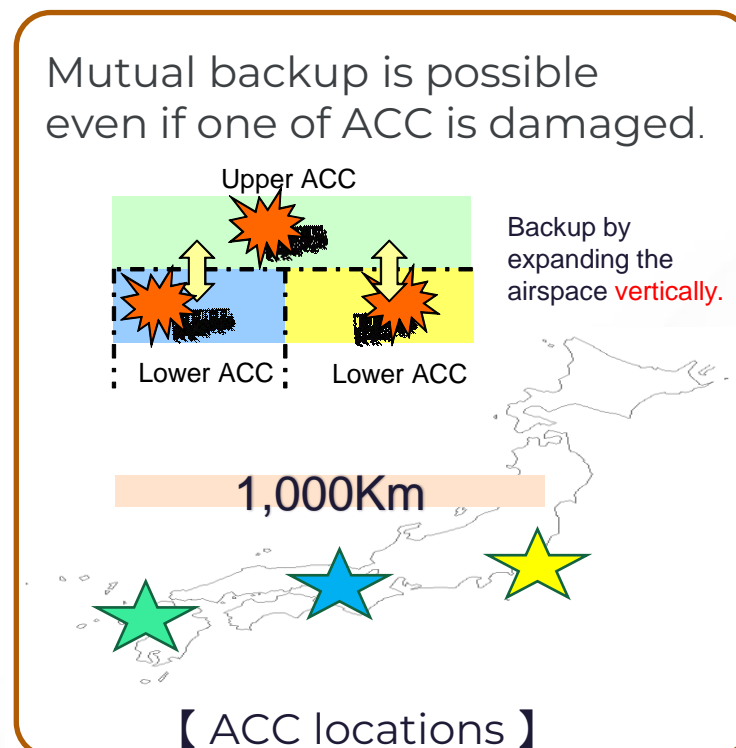
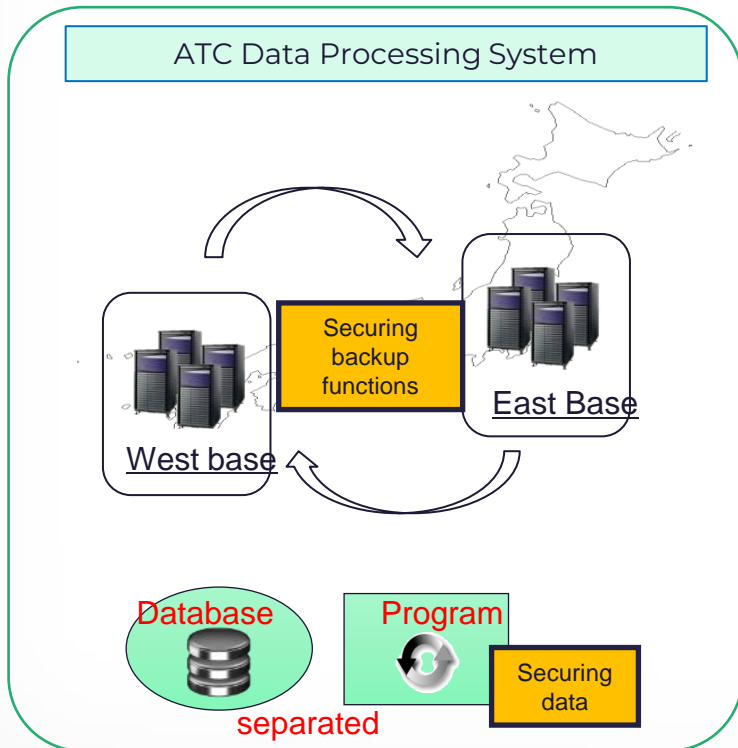
ystem the
t flight po
ity of par
Available
Parking /
wingspan



assigns
fuel
er to

PREPARING FOR DISASTERS

- The basis of crisis management is to learn from the past. It is then important to use imagination when considering how to respond.
- Normally, Decisions on new schemes and investments will be based on cost-effectiveness.
- In many cases, difficult decisions are made regarding crisis management. Leadership qualities and wise decisions are needed.



Emergency ATC tower



Emergency radar facility



THANK YOU