

CANSO ATM TRAFFIC ANALYSIS REPORT

NOVEMBER 2023

Strong traffic numbers continue well past seasonal peak

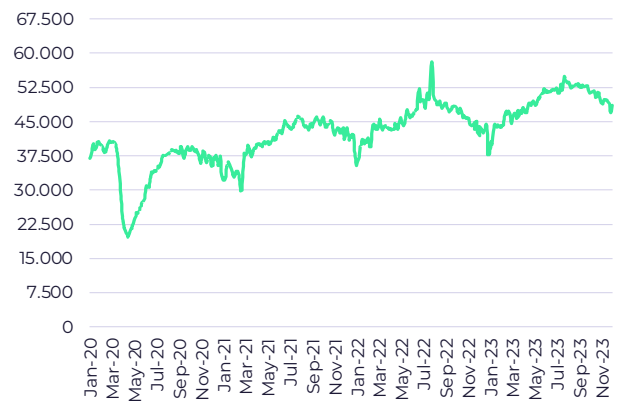
- There were approximately 3.84 million flights operated globally in November 2023. This represents a 17.6 per cent increase on the number of flights in November 2022 and is 17.4 per cent higher than the 3.27 million flights in November 2019.
- November 2023 saw 7.08 million flight hours operated globally. This is a 13.0 per cent increase on the number of flight hours in November 2022 and is 5.8 per cent higher than the 6.68 million flight hours operated in November 2019.

Healthy volumes across all regions

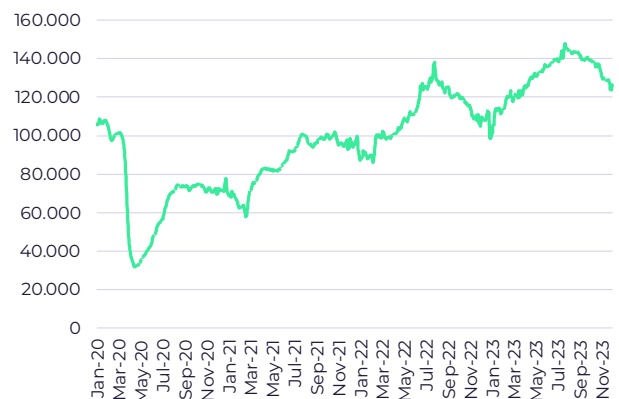
November is normally one of the lowest volume months of the year. Key markets in the northern hemisphere have ended their seasonal peak that drive July and August volumes and the southern hemisphere is being to enter its summer season.

November 2023 showed strong traffic numbers with only a small drop off from October. Globally there were an average of 128,000 flights daily in November with 222,900 flight hours operated.

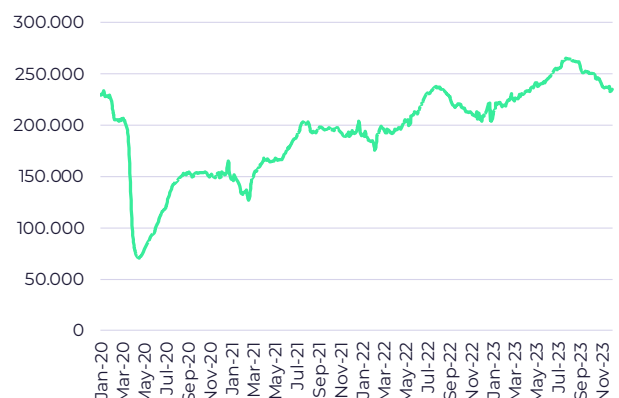
AVERAGE UNIQUE AIRCRAFT



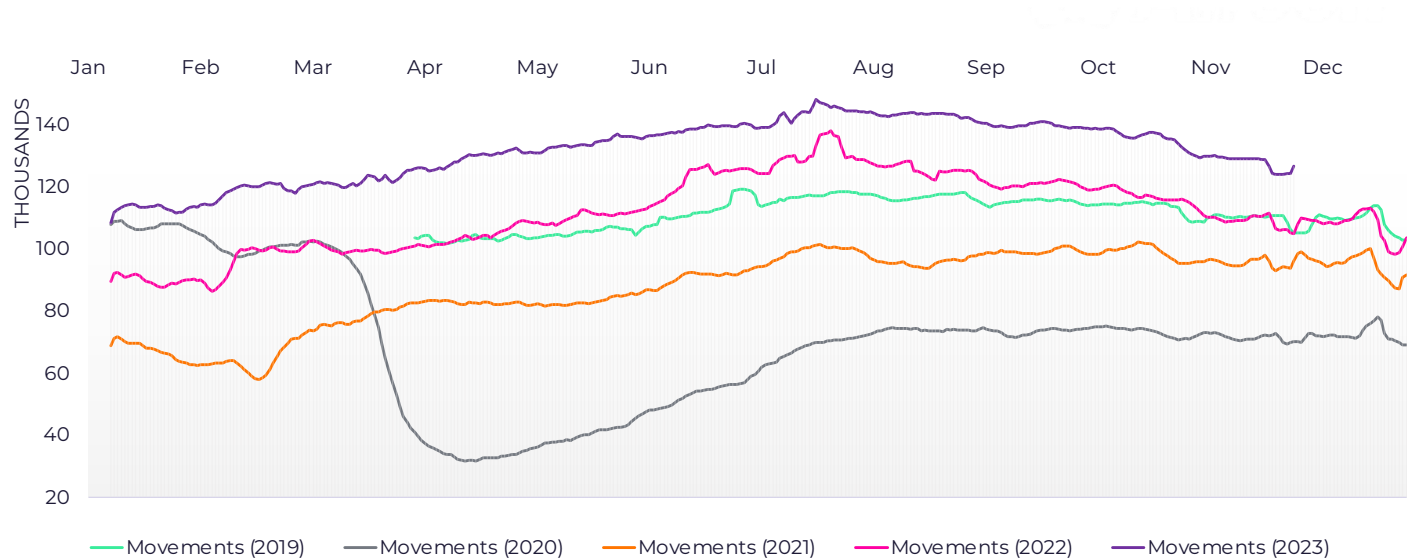
AVERAGE GLOBAL FLIGHTS



AVERAGE GLOBAL FLIGHT HOURS

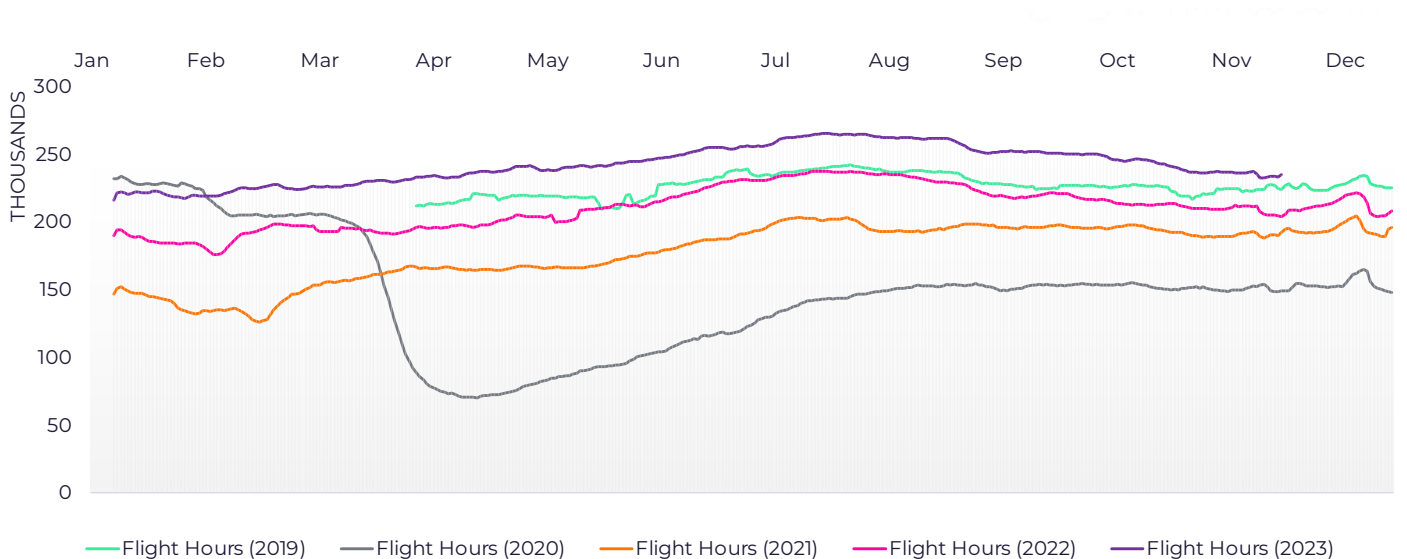


Global daily flights variation



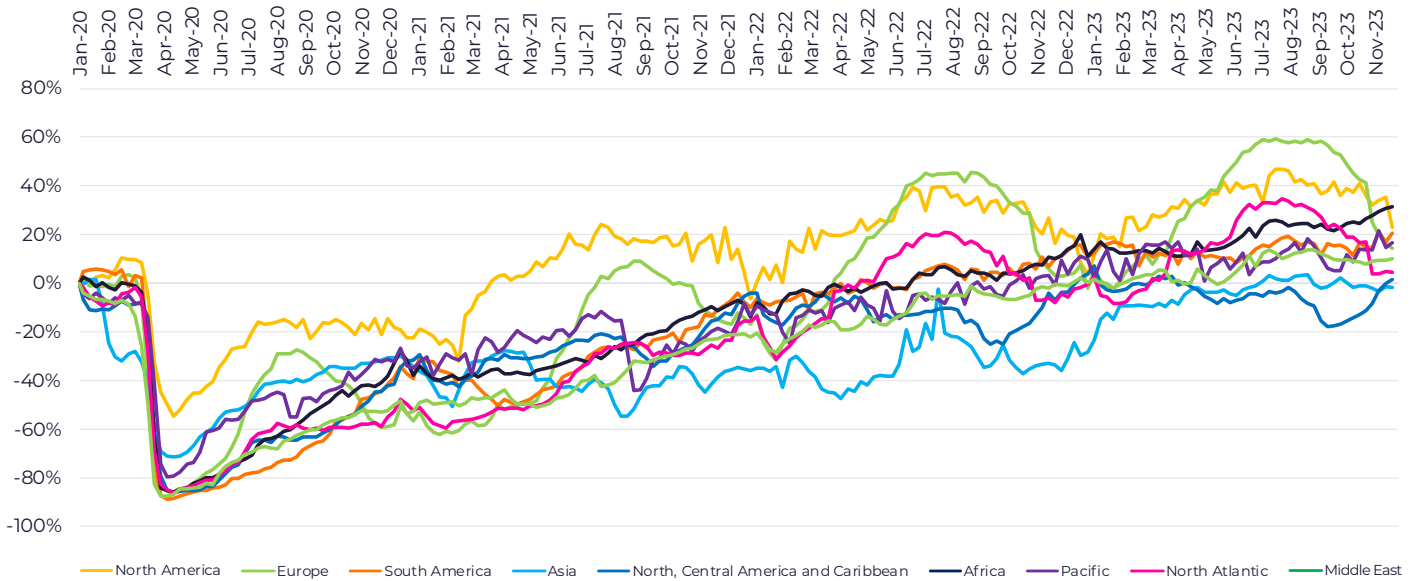
The rolling 7-day average of global daily flight volumes stayed between 124,000 and 130,000 flights daily in November.

Daily Flight Hours



Global flight hours are an important metric of ATM workload. The daily post pandemic high was set on July 28, 2024 when 269,000 flight hours were operated globally. In November daily flight hours ranged between 224,000 and 248,000 hours.

Per cent change in movements by region



Strong November traffic volumes were seen in Africa and Central America and the Caribbean. Seasonal declines occurred in the North Atlantic and Europe and to a lesser extent in North America, but traffic in those regions remained ahead of 2022. Year over year changes were largest in Asia where recovery has been swift following the lifting of remaining COVID-19 related travel restrictions.

Year over Year growth in Flights and Flight Hours by Region

	Dates	Average daily flight hours	Per cent change	Average daily movements	Per cent change
Middle East	20-Nov-2022	9,700	7%	6,100	10%
	19-Nov-2023	10,400		6,700	
North America	20-Nov-2022	68,800	5%	44,300	5%
	19-Nov-2023	72,000		46,700	
Europe	20-Nov-2022	41,900	1%	25,700	11%
	19-Nov-2023	42,400		28,600	
South America	20-Nov-2022	10,900	12%	6,400	9%
	19-Nov-2023	12,200		7,000	
Asia	20-Nov-2022	53,800	39%	23,200	49%
	19-Nov-2023	74,800		34,500	
Caribbean	20-Nov-2022	8,500	8%	5,900	10%
	19-Nov-2023	9,200		6,500	
Africa	20-Nov-2022	4,400	20%	2,000	20%
	19-Nov-2023	5,300		2,400	
North Atlantic	20-Nov-2022	6,100	11%	2,100	14%
	19-Nov-2023	6,800		2,400	

ABOUT THE ATM REPORT

The ATM Report is issued monthly by CANSO as an analysis of metrics directly relevant to the ATM industry. The report uses high fidelity global space-based ADS-B air traffic data provided via a partnership with Aireon. The data includes surveillance of all 1090Mhz ADS-B Equipped aircraft. While some non-ADS-B equipped aircraft may not be included, the data is appropriate for the monitoring of global trends in traffic levels.



ABOUT CANSO

The Civil Air Navigation Services Organisation (CANSO) is the global voice of air traffic management. CANSO Members support almost 90 per cent of world air traffic and represent leading providers of technology and services to the industry. Members share information and develop new policies, with the ultimate aim of improving air navigation services.

For more information, please visit canso.org.



ABOUT AIREON

Aireon is harnessing next-generation aviation surveillance technologies that were formerly ground-based and, for the first time ever, is extending their reach globally through the use of satellite technology to significantly improve efficiency, enhance safety, reduce emissions and provide cost savings benefits to all stakeholders.

For more information, please visit aireon.com.

