

Fields of Application

How to choose your Blockchain

The following flowchart provides a general rule-of-thumb to determine if blockchain is a practical solution based on the applied use-cases, and offers a suggested type of blockchain that may be most suitable. It is important to note that this flowchart conveys decisions from a high-level perspective, and additional considerations and concerns may come into play for different scenarios. To gain a general sense of when a blockchain may be beneficial, and the type of blockchain that would most appropriately suffice for the mission need, refer to the flowchart below:

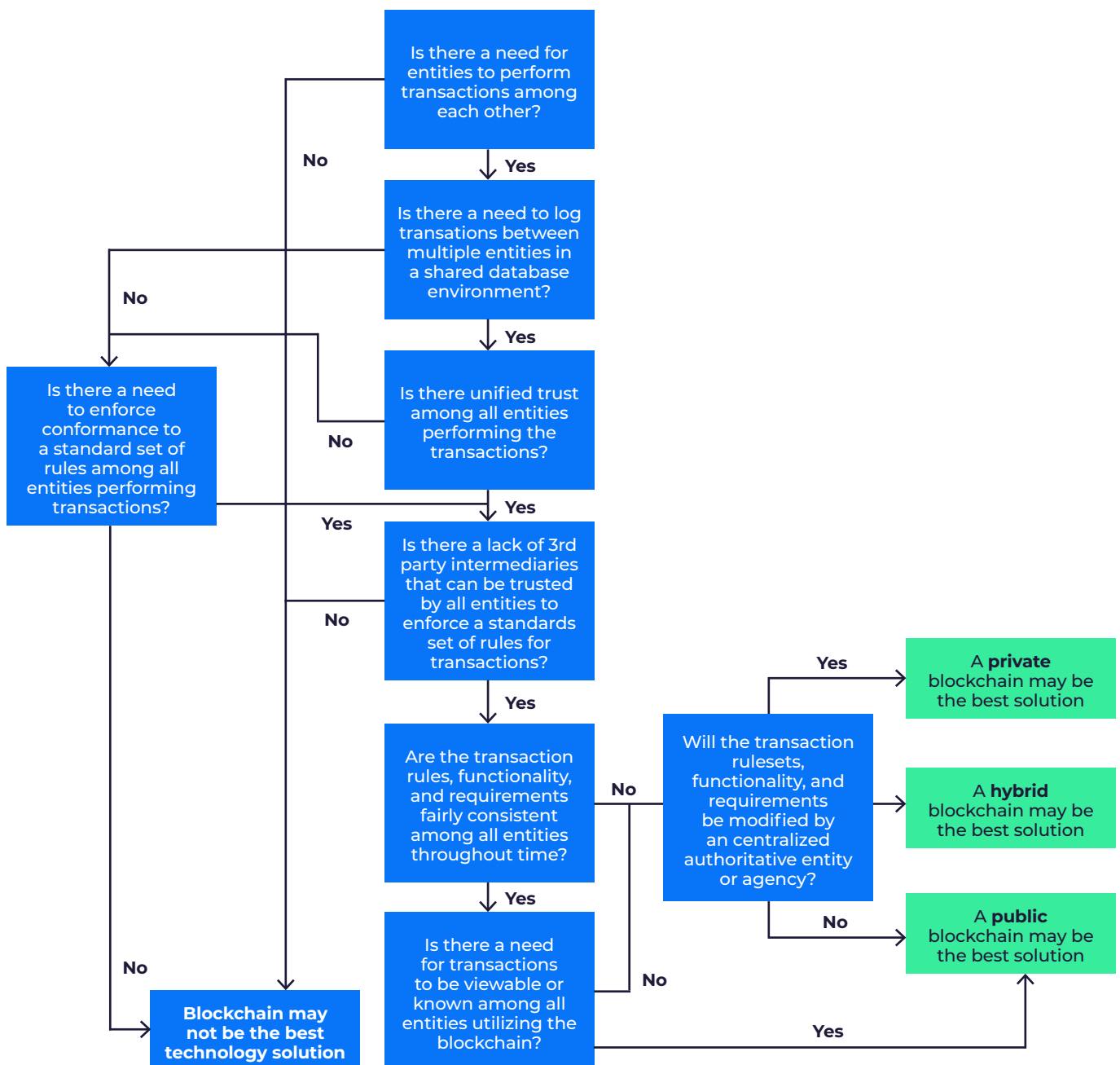


Figure 4 – Determining a Blockchain Solution