

CANSO ATM TRAFFIC ANALYSIS REPORT

NOVEMBER 2021

Global flight hours remain down approximately 15% in November

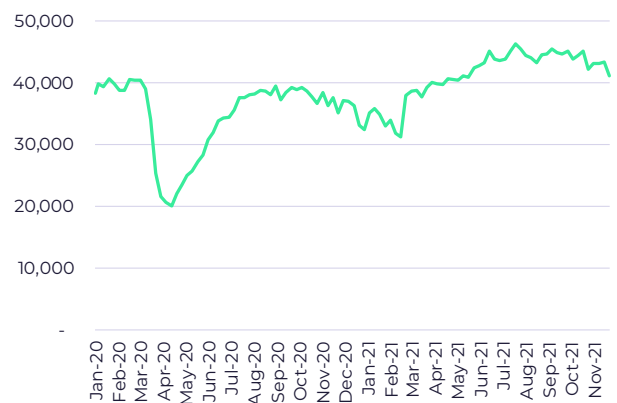
- There were 2.96 million flights operated globally in November 2021. This represents 87.6% of the 3.38 million flights operated in November 2019.
- November 2021 saw 5.90 million flight hours operated globally. This is 85.1% of the 6.93 million flight hours flown in November 2019.

Some contraction in long haul air traffic being felt

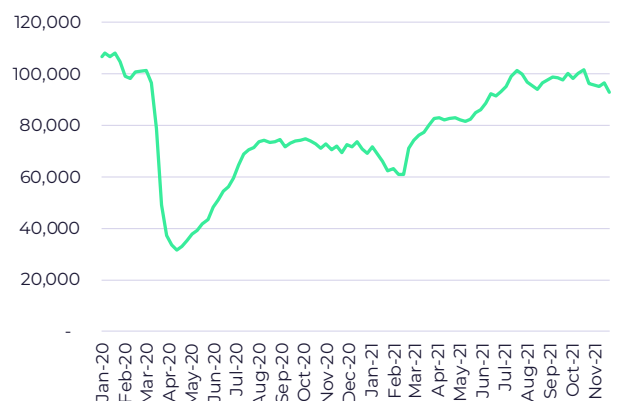
While monthly flight numbers gained 0.5% in comparison to 2019 to achieve recovery at 87.6%, there was some contraction in global flight hours operated, which fell from 86.7% of 2019 levels in October to 85.1% of 2019 levels in November.

Average global flight lengths remain below pre-pandemic averages, a reflection of the disproportionate effect of travel restrictions on long haul international flights.

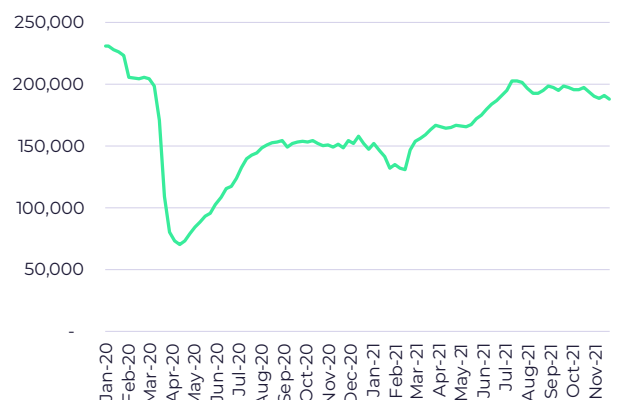
AVERAGE UNIQUE AIRCRAFT



AVERAGE GLOBAL FLIGHTS

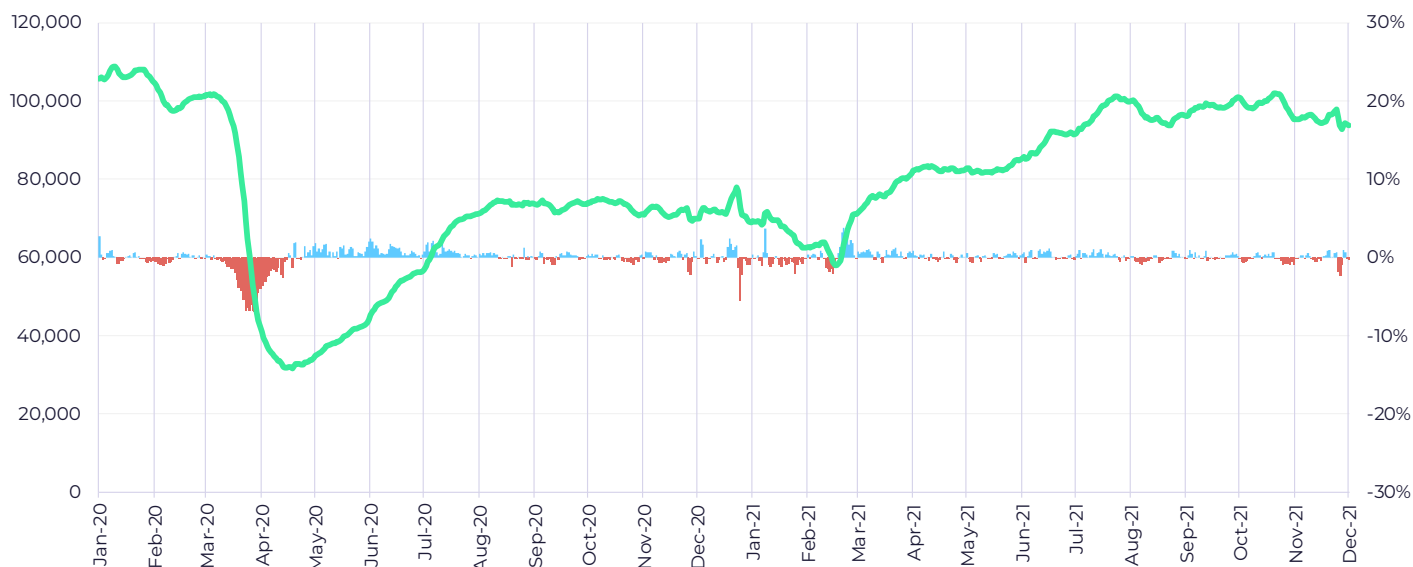


AVERAGE GLOBAL FLIGHT HOURS



Global daily flights variation

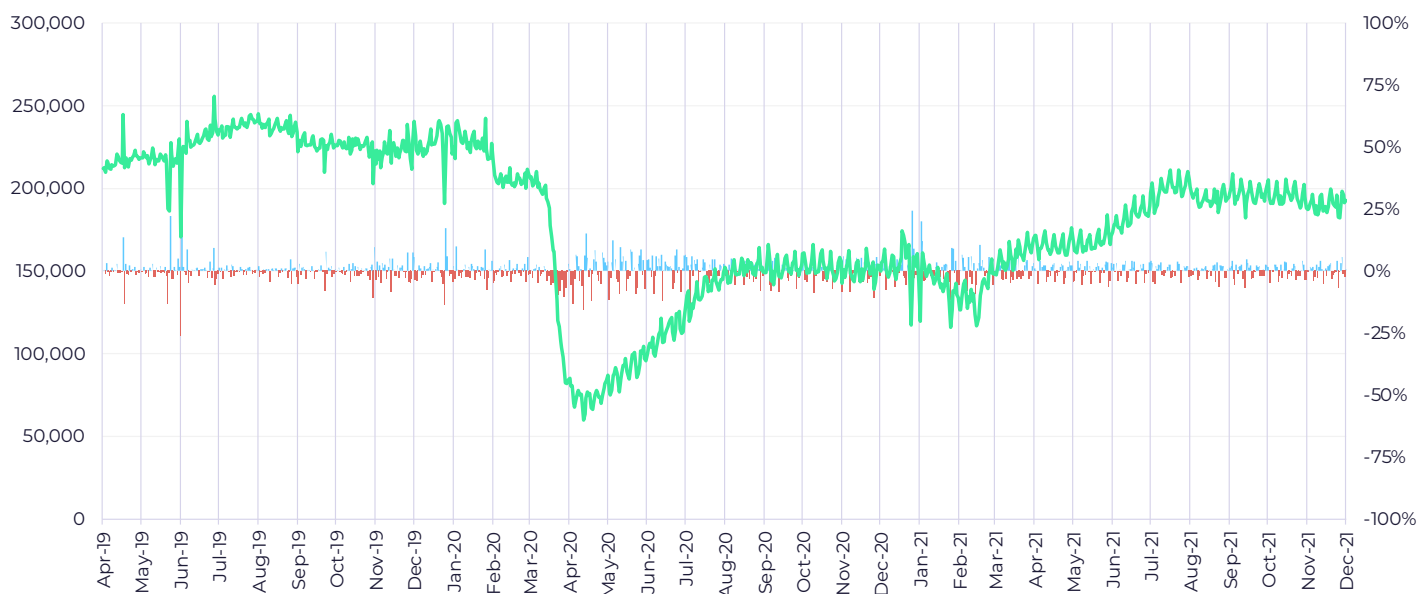
ROLLING 7-DAY AVERAGE OF DAILY FLIGHTS



The rolling 7-day average of global daily flight volumes ranged between 97,700 and 92,700 flights in November. The post-pandemic high remains October 20 2021 when the 7-day average reached 102,000.

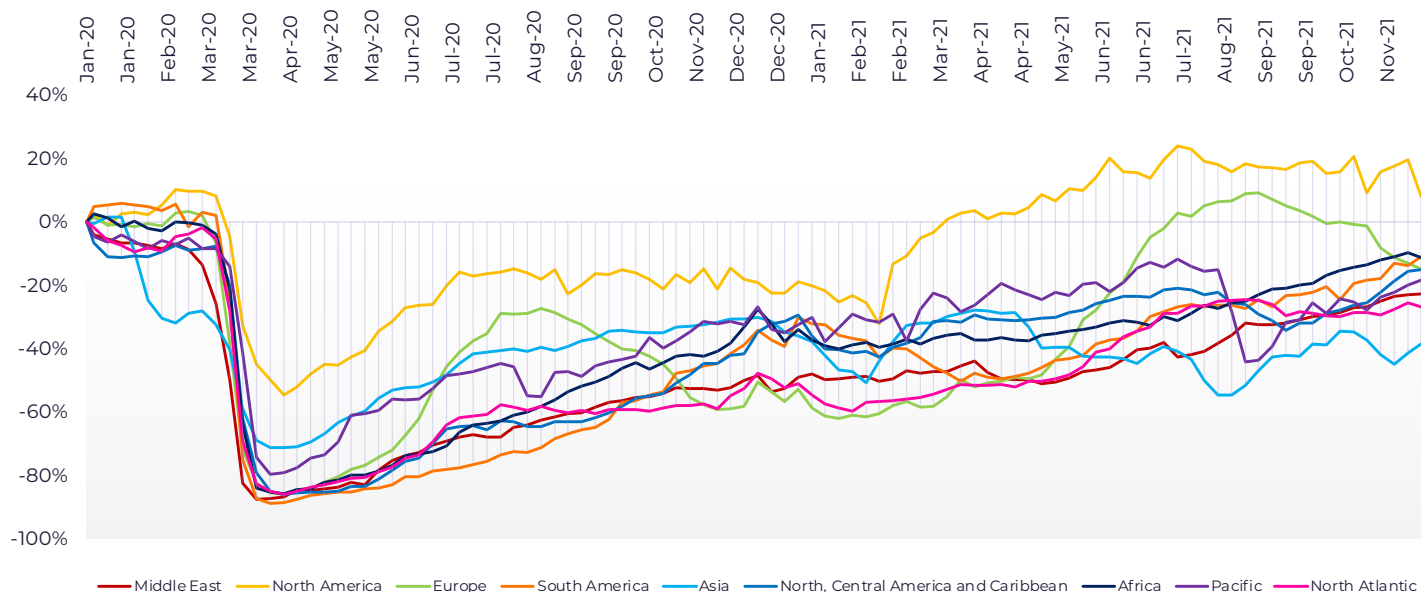
Daily flight hours

FLIGHT HOURS SINCE APRIL 2019 WITH PERCENTAGE OF DAY-TO-DAY VARIABILITY



Global flight hours are an important metric of ATM workload. 23 July continues to represent the post-pandemic high point with 211,000 flight hours operated. Daily flight hours in November 2021 ranged between 199,600 and 182,500 hours per day.

Percent change in movements by region



The North Atlantic region saw minor increases in traffic following the opening up of US borders early in the month. Growth in South America and the Caribbean daily volumes and daily flight declines in Europe are not out of line with normal seasonal variations. Recovery in Asia continues to be hampered by strict travel rules and the region remains the most significantly off of normal air traffic volumes.

Tracking the recovery: Flights and flight hours by region

	Dates	Average daily flight hours	Percent change	Average daily movements	Percent change
Middle East	01 Jan 2020 21 Nov 2021	7,400 7,600	+3%	6,100 4,700	-23%
North America	01 Jan 2020 21 Nov 2021	67,400 70,500	+5%	38,000 41,200	+8%
Europe	01 Jan 2020 21 Nov 2021	44,700 39,000	-13%	24,900 21,300	-14%
South America	01 Jan 2020 21 Nov 2021	10,700 8,800	-18%	5,800 5,200	-10%
Asia	01 Jan 2020 21 Nov 2021	74,900 47,900	-36%	35,000 21,500	-39%
Caribbean	01 Jan 2020 21 Nov 2021	9,100 7,800	-14%	6,400 5,400	-16%
Africa	01 Jan 2020 21 Nov 2021	4,200 3,700	-12%	1,800 1,600	-11%
North Atlantic	01 Jan 2020 21 Nov 2021	6,800 5,200	-24%	2,300 1,700	-26%

ABOUT THE ATM REPORT

The ATM Report is issued bi-weekly by CANSO as an analysis of metrics directly relevant to the ATM industry. The report uses high fidelity global space-based ADS-B air traffic data provided via a partnership with Aireon. The data includes surveillance of all 1090Mhz ADS-B Equipped aircraft. While some non-ADS-B equipped aircraft may not be included, the data is appropriate for the monitoring of global trends in traffic levels.



ABOUT CANSO

The Civil Air Navigation Services Organisation (CANSO) is the global voice of air traffic management. CANSO Members support almost 90 percent of world air traffic and represent leading providers of technology and services to the industry. Members share information and develop new policies, with the ultimate aim of improving air navigation services.

For more, visit canso.org.



ABOUT AIREON

Aireon is harnessing next-generation aviation surveillance technologies that were formerly ground-based and, for the first time ever, is extending their reach globally through the use of satellite technology to significantly improve efficiency, enhance safety, reduce emissions and provide cost savings benefits to all stakeholders.

For more information, please visit aireon.com.

