

# CANSO ATM Traffic Analysis Report

2 July 2020

## Second half of June sees continued but slower growth

- The average number of daily flights for the weeks of 14 June and 21 June 2020 were 54,500 and 56,200 respectively. This represents a decline of 53% from the comparable global daily average in June 2019 when over 118,000 flights operated daily.
- Average daily flight hours for the weeks of 14 June and 21 June 2020 were 108,900 and 118,200 respectively. That remains 50% less than average global daily flight hours the year prior, when 237,800 flight hours occurred daily.

## Evidence fleet is returning

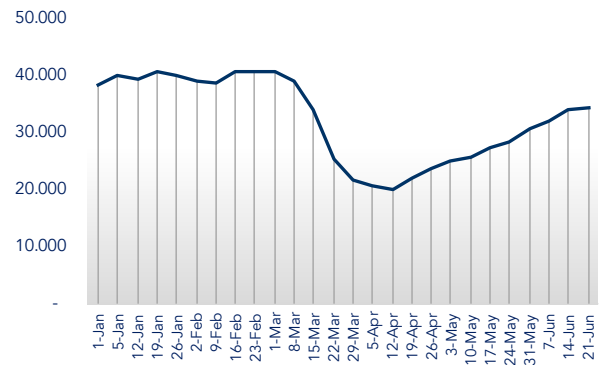
While traffic levels are continuing to see increases in many regions, year over year comparisons that factor in summer 2019 traffic peaks remind us how far we still have to go.

Globally, over 5,000 additional daily flights were added in the past two weeks, while in 2019 an additional 9,000 were added in the latter half of June over levels in mid-June. The normal summer peak in July and August will look a lot different this year, but with additional flight capacity planned, continued improvements should be visible in what are normally the two busiest months of the year.

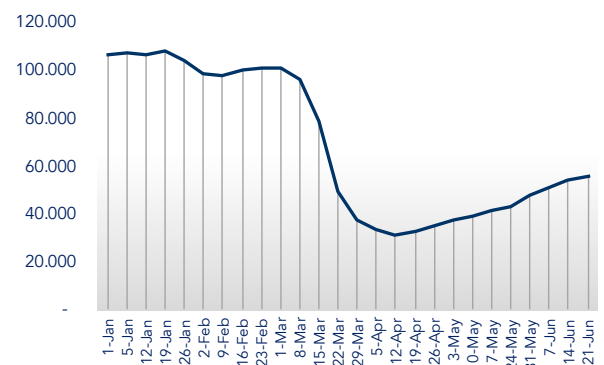
Evidence does show that airlines are bringing aircraft back into service. Global surveillance data for the week of 21 June 2020 confirms that an average of 34,300 unique aircraft were operating daily. This is approximately 10,000 fewer than at the same time in 2019, but 14,000 more than were operating in mid-April, when traffic was at its lowest.

Global daily flight hours have increased by 48,000 hours from the same point in mid-April, an increase of 68% over 11 weeks.

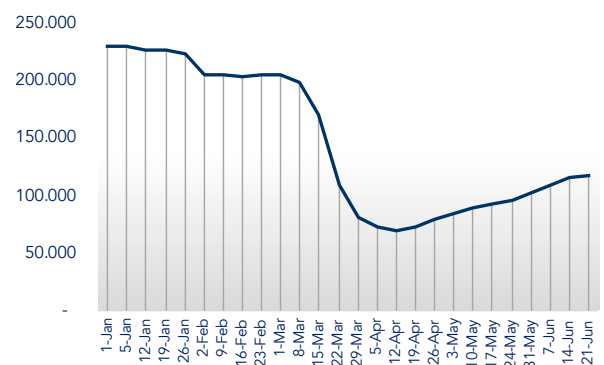
### Average unique aircraft



### Average global flights

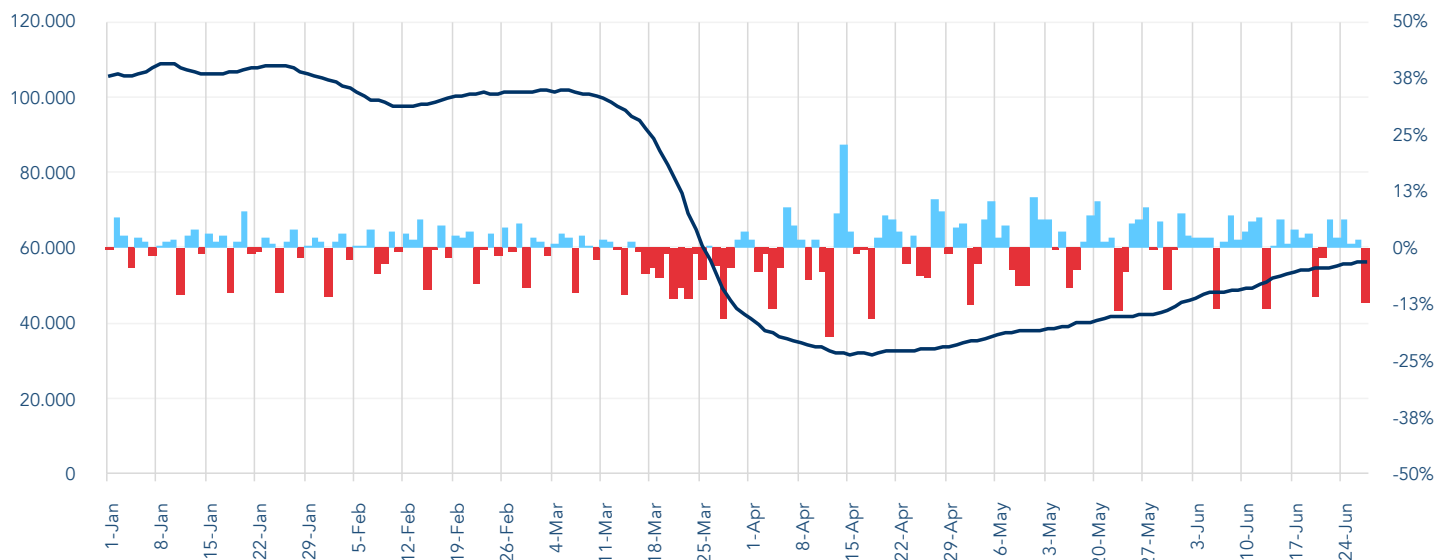


### Average global flight hours



# Global daily flights variation

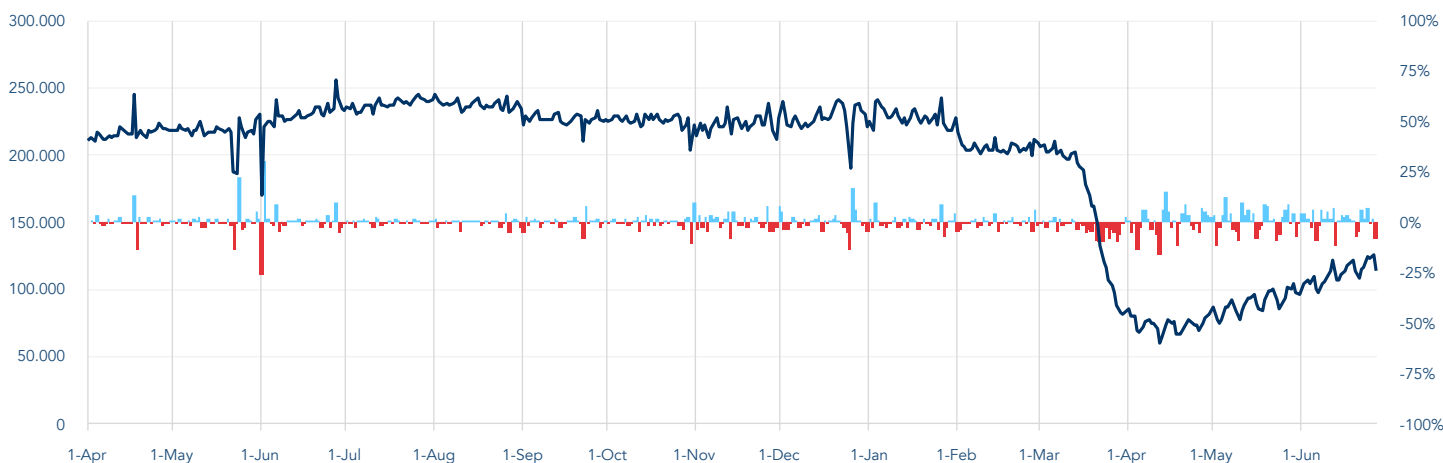
## Rolling 7-day average of daily flights



For over three months global air traffic volumes have remained at less than half of normal levels. Based on normal traffic levels, over 7.5 million flights have not occurred since pandemic related flight restrictions first came into effect at the beginning of February.

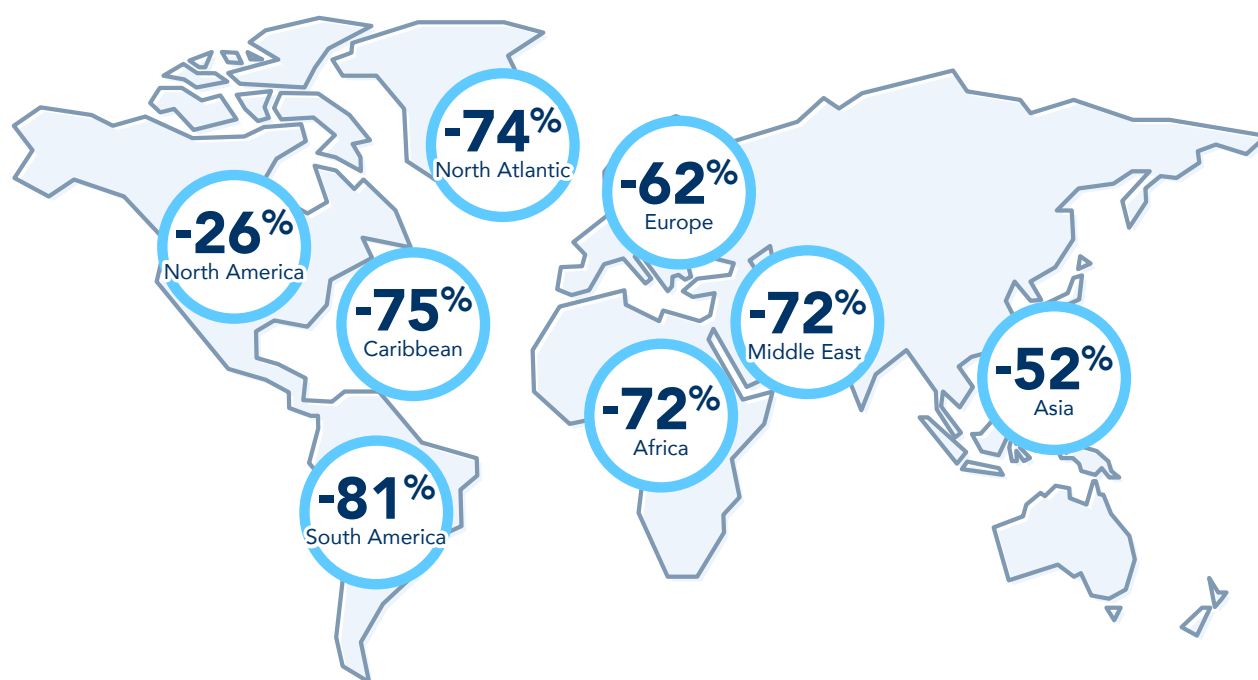
## Daily flight hours

### Flight hours since April 2019 with percentage of day-to-day variability



Daily flight hours, an important metric of ATM workload, reached its highest level since 22 March on 24 June 2020 when 124,400 hours were flown globally.

## Regional traffic brief



The largest increase in traffic in the past two weeks was seen in Europe where an average of 2,500 additional daily flights were added. South America remains the most severely impacted region with 1,100 daily flights operating, a fraction of their normal traffic levels. Average daily traffic levels in Asia were relatively flat over the month of June as increases in some countries were offset by new restrictions others. North America numbers remain heavily influenced by General Aviation and Business Aviation activity.

## Average daily flight hours and average daily movements by region

	Dates	Average daily flight hours	Percent change	Average daily movements	Percent change
<b>Middle East</b>	01 Jan 2020 21 Jun 2020	7,400 2,600	65%	6,100 1,700	72%
<b>North America</b>	01 Jan 2020 21 Jun 2020	67,400 51,100	24%	38,000 28,000	26%
<b>Europe</b>	01 Jan 2020 21 Jun 2020	44,700 17,700	60%	24,900 9,500	62%
<b>South America</b>	01 Jan 2020 21 Jun 2020	10,700 2,600	76%	5,800 1,100	81%
<b>Asia</b>	01 Jan 2020 21 Jun 2020	74,900 36,000	52%	35,000 16,700	52%
<b>Caribbean</b>	01 Jan 2020 21 Jun 2020	9,100 2,700	70%	6,400 1,600	75%
<b>Africa</b>	01 Jan 2020 21 Jun 2020	4,200 1,700	60%	1,800 500	72%
<b>North Atlantic</b>	01 Jan 2020 21 Jun 2020	6,800 1,700	75%	2,300 600	74%

## About the ATM report

The ATM Report is issued bi-weekly by CANSO as an analysis of metrics directly relevant to the ATM industry. The report uses high fidelity global space-based ADS-B air traffic data provided via a partnership with Aireon. The data includes surveillance of all 1090Mhz ADS-B Equipped aircraft. While some non-ADS-B equipped aircraft may not be included, the data is appropriate for the monitoring of global trends in traffic levels.

## About CANSO



The Civil Air Navigation Services Organisation (CANSO) is the global voice of air traffic management. CANSO Members support almost 90 percent of world air traffic and represent leading providers of technology and services to the industry. Members share information and develop new policies, with the ultimate aim of improving air navigation services. For more, visit [canso.org](https://canso.org).

## About Aireon



Aireon is harnessing next-generation aviation surveillance technologies that were formerly ground-based and, for the first time ever, is extending their reach globally through the use of satellite technology to significantly improve efficiency, enhance safety, reduce emissions and provide cost savings benefits to all stakeholders. For more information, please visit [aireon.com](https://aireon.com).

