

# CANSO ATM Traffic Analysis Report

18 June 2020

## Sustained weekly increases in global air traffic volumes continue

- The average number of daily flights for the weeks of 31 May and 7 June, 2020 were 48,100 and 51,100 respectively. This represents a decline of 54% from the comparable global daily average in June 2019 when over 110,000 flights operated daily but a 62% increase on the lowest daily flights average experienced in mid April.
- Average daily flight hours for the weeks of 31 May and 7 June, 2020 were 103,100 and 108,900 respectively. That remains 52% less than average global daily flight hours the year prior, when 227,000 flight hours occurred daily.

## Impact on long haul traffic continues to be felt

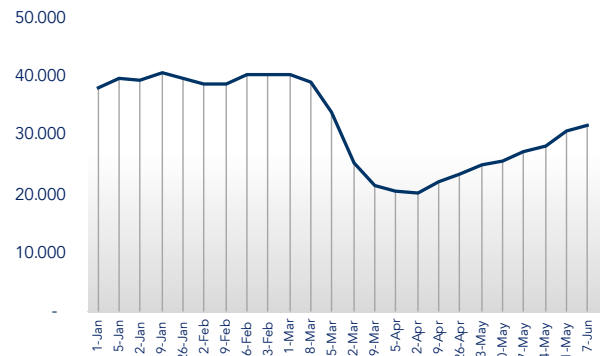
It has now been 8 weeks of small but steady increases in air traffic as international restrictions begin to lift and domestic growth occurs.

Globally, the decline of daily flights reached its most severe at -70% of 2019 volumes in mid-April. After 8 weeks of sustained growth the industry remains -54% of 2019 volumes. It is clear that global traffic volumes that fell precipitously over a period of a few weeks in March will take much longer to return.

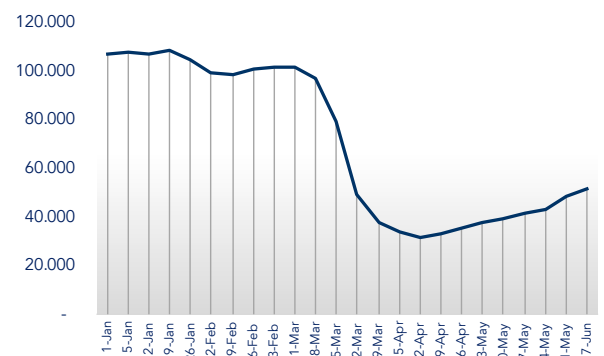
Looking at the numbers of aircraft operating daily provides a more encouraging sign. Global surveillance data shows that for the week of 7 June 2020 31,900 unique aircraft were operating daily. This suggests that aircraft operators are bringing aircraft back into service and that over 8000 aircraft that had ceased operating for a period in April are back in the skies.

However, the erosion of long-haul international flights has had a significant impact on traffic. In early January 2020, aircraft that were operating on a daily basis flew an average of 6 hours per day each. In early June, aircraft were operating an average of 3.4 hours daily.

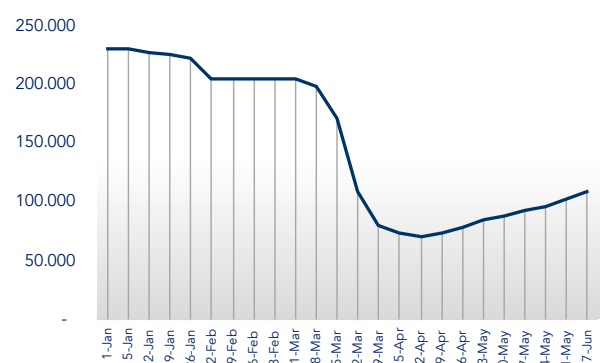
### Average unique aircraft



### Average global flights

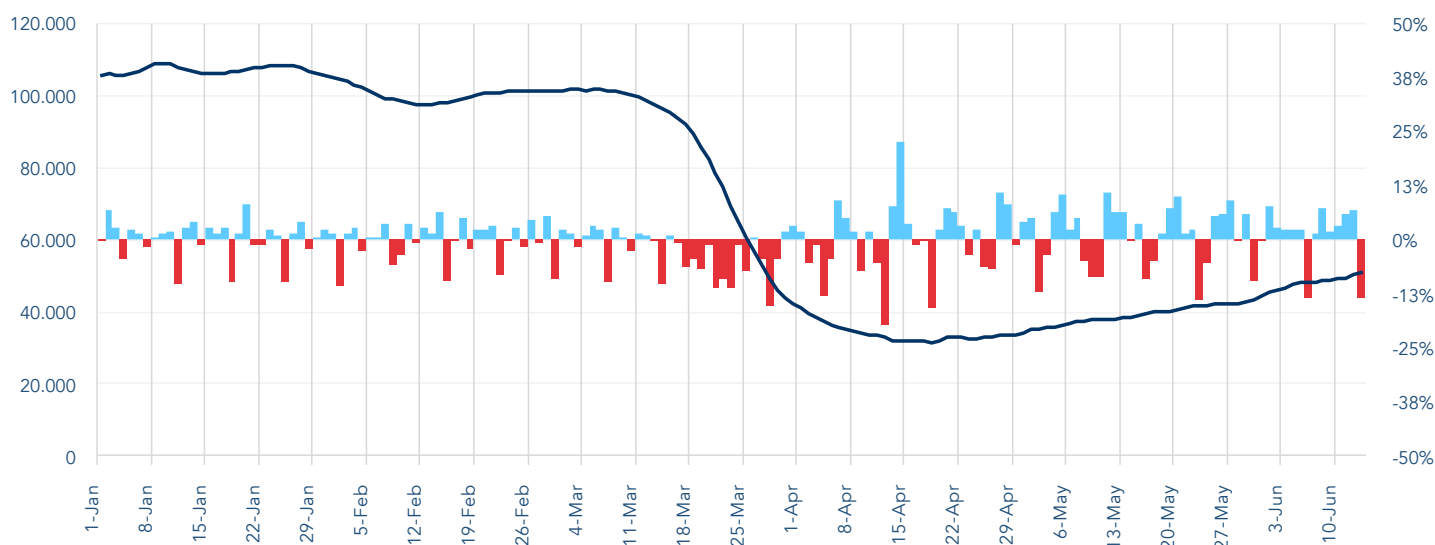


### Average global flight hours



# Global daily flights variation

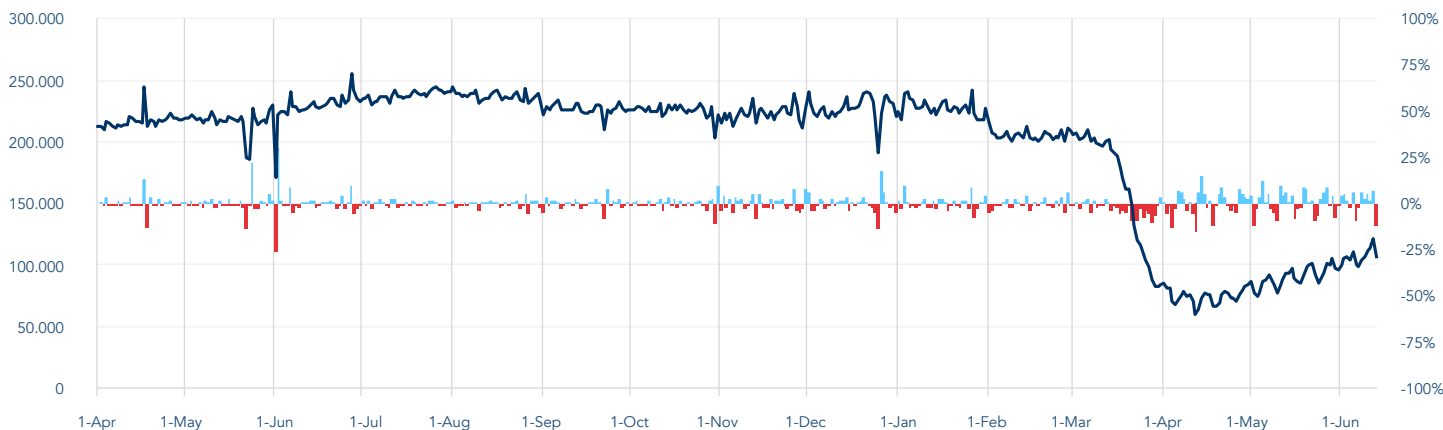
## Rolling 7-day average of daily flights



For almost three months global air traffic volumes have remained below 50% of normal levels. The impact of such declines has been felt across the entire industry. This will be felt even more keenly if declines extend into early July, which in many regions is normally the busiest period of the year for air traffic volumes.

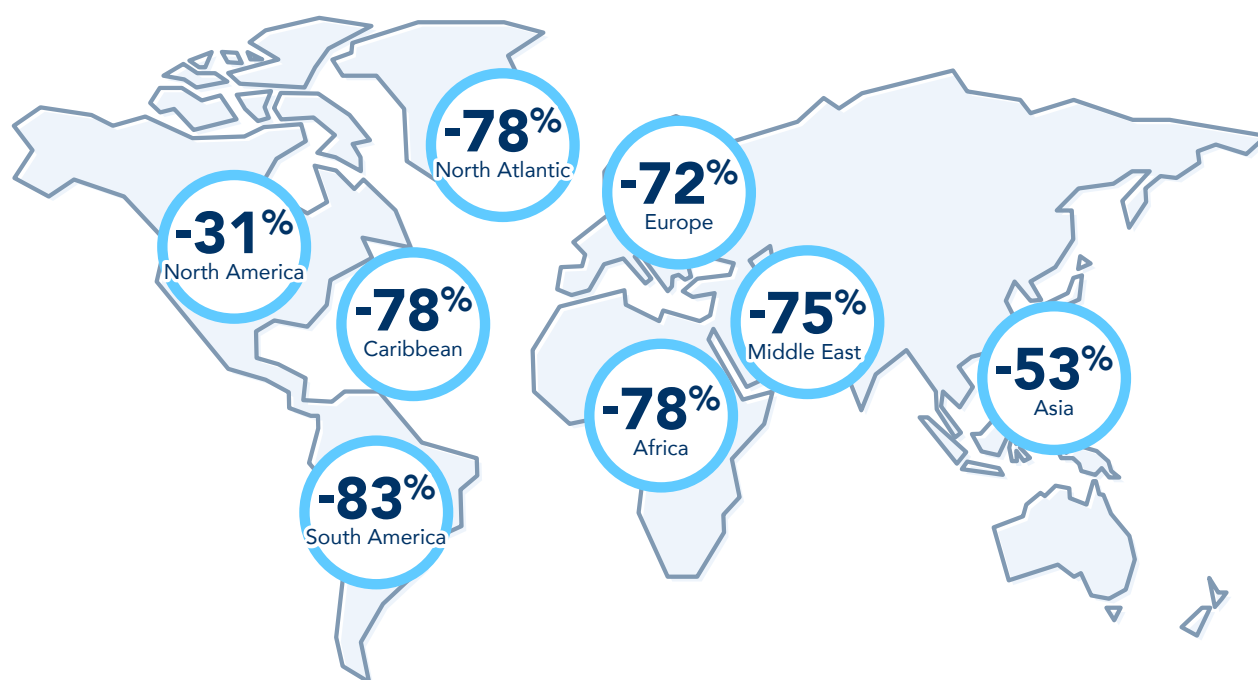
## Daily flight hours

### Flight hours since April 2019 with percentage of day-to-day variability



Daily flight hours, an important metric of ATM workload, hit 121,300 on 12 June 2020. This is the highest daily flight hours since twelve weeks earlier on 22 March 2020.

## Regional traffic brief



All regions experienced small improvements in the average number of flights per day over the previous two week period, with the exception of Africa where traffic levels remained flat at -78%.

Asia continued to see improvements with 2,300 additional flights per day added. And an additional 1,200 flights operated daily in Europe over the previous two week period. North America saw the most significant rebound, with daily flight figures rising to -31 percent down on volumes experienced in January, before travel restrictions came into effect.

## Average daily flight hours and average daily movements by region

	Dates	Average daily flight hours	Percent change	Average daily movements	Percent change
<b>Middle East</b>	01 Jan 2020 07 Jun 2020	7,400 2,500	66%	6,100 1,500	75%
<b>North America</b>	01 Jan 2020 07 Jun 2020	67,400 47,900	29%	38,000 26,100	31%
<b>Europe</b>	01 Jan 2020 07 Jun 2020	44,700 14,000	69%	24,900 7,000	72%
<b>South America</b>	01 Jan 2020 07 Jun 2020	10,700 2,200	79%	5,800 1,000	83%
<b>Asia</b>	01 Jan 2020 07 Jun 2020	74,900 35,900	52%	35,000 16,400	53%
<b>Caribbean</b>	01 Jan 2020 07 Jun 2020	9,100 2,200	76%	6,400 1,400	78%
<b>Africa</b>	01 Jan 2020 07 Jun 2020	4,200 1,400	67%	1,800 400	78%
<b>North Atlantic</b>	01 Jan 2020 07 Jun 2020	6,800 1,500	78%	2,300 500	78%

## About the ATM report

The ATM Report is issued bi-weekly by CANSO as an analysis of metrics directly relevant to the ATM industry. The report uses high fidelity global space-based ADS-B air traffic data provided via a partnership with Aireon. The data includes surveillance of all 1090Mhz ADS-B Equipped aircraft. While some non-ADS-B equipped aircraft may not be included, the data is appropriate for the monitoring of global trends in traffic levels.

## About CANSO



The Civil Air Navigation Services Organisation is the global voice of air traffic management. CANSO's members support almost 90 percent of world air traffic and represent leading providers of technology and services to the industry. Members share information and develop new policies, with the ultimate aim of improving air navigation services. For more, visit [canso.org](https://www.canso.org).

## About Aireon



Aireon is harnessing next-generation aviation surveillance technologies that were formally ground-based and, for the first time ever, is extending their reach globally through the use of satellite technology to significantly improve efficiency, enhance safety, reduce emissions and provide cost savings benefits to all stakeholders. For more information, please visit [aireon.com](https://www.aireon.com).

